

CLARKE®



FOLDING WORKBENCH

MODEL NO: CFWB1

PART NO: 6501580

ASSEMBLY INSTRUCTIONS

ORIGINAL INSTRUCTIONS

LS0418 - ISS 2

INTRODUCTION

Thank you for selecting this Clarke folding workbench.

Read this manual before use, the warnings and cautions in this manual will help you operate the workbench safely.

GUARANTEE

This product is guaranteed against faulty manufacture for a period of 12 months from the date of purchase. Please keep your receipt which will be required as proof of purchase.

This guarantee is invalid if the product is found to have been abused or tampered with in any way, or not used for the purpose for which it was intended.

Faulty goods should be returned to their place of purchase, no product can be returned to us without prior permission.

This guarantee does not effect your statutory rights.

SAFETY PRECAUTIONS

1. This workbench has a capacity of 150 kg which must not be exceeded.
2. Do not stand on the cross members or use as a step ladder, as this could cause severe damage. Do not stand on top of the workbench.
3. Take care when placing a load on to the workbench, It should be placed gently so that the strain is taken up gradually. Do not drop a load carelessly.
4. Do not mount power tools on the workbench.
5. Always check the workbench for wear or damage before use.
6. Always ensure you are working on a firm flat stable surface.

SPECIFICATIONS

Dimensions L x W x H	605 x 715 x 770 mm
Maximum Load	150 kg

ASSEMBLY

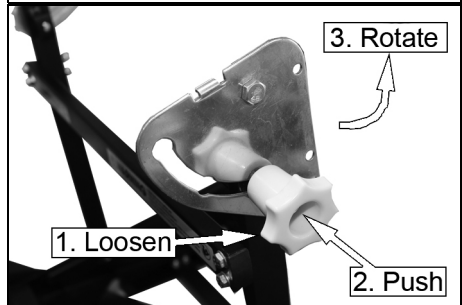
1. Lift the front and rear frames as shown.



2. Loosen the yellow knob on the side a couple of turns.

3. Push and hold the yellow knob inwards.

4. Turn the silver bracket 90 degrees.

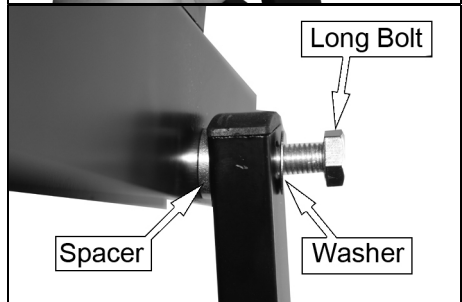


5. Hold the top section in position and slide a spacer between the frame and top section as shown.

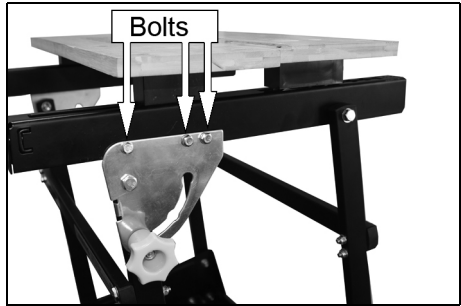


6. Secure the rear frame to the top section using the long bolts, washers and nuts supplied.

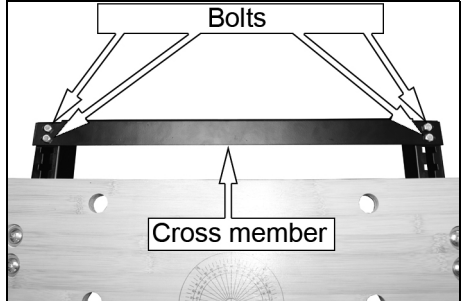
7. Repeat steps 5 and 6 on the other side of the workbench.



8. Attach the silver bracket to the top section as shown using 3 bolts, 6 washer and 3 nuts supplied.
9. Repeat step 8 on the other side of the workbench.

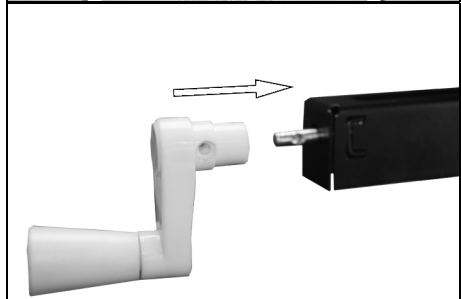


10. Attach the cross member to the top section as shown.
11. Secure in position using the remaining 4 bolts washers and nuts supplied.

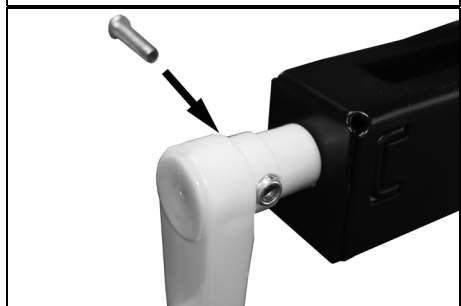


ATTACH THE HANDLE

12. Push the handle on to the shaft.



13. Put a captive nut into the handle and secure the handle to the shaft using the machine screw supplied.

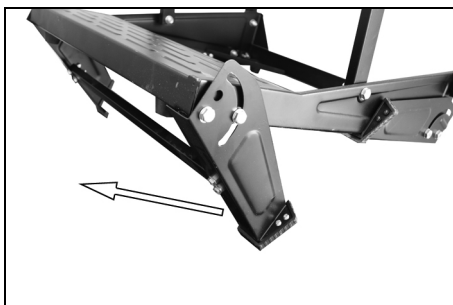


14. Your workbench is ready for use

OPENING/CLOSING THE WORKBENCH

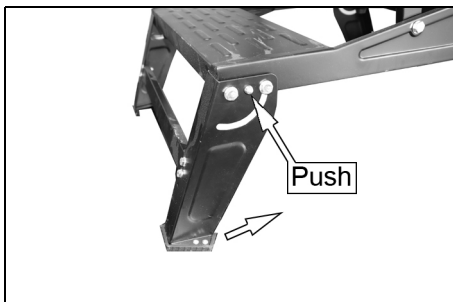
OPENING

1. If required, loosen the yellow knobs on the side a couple of turns.
2. Push and hold the yellow knob inwards and lift the table upwards.
 - There are 2 heights at which the table will lock into place.
3. Rotate the feet to the open position.
 - The feet will lock into place when fully opened.
4. Test the stability of the table by rocking it vigorously.



CLOSING

1. Push the locking pin in and swing the legs under the bench as far as possible.
2. If required, loosen the yellow knobs on the side a couple of turns.
3. Push the locking knobs inwards and lower the table.

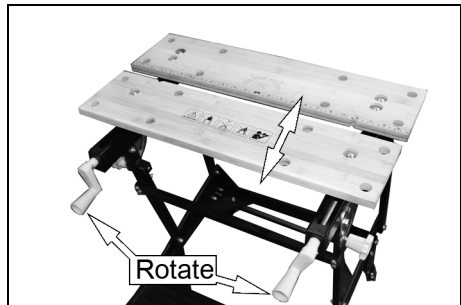


USING THE WORKBENCH

1. Rotate the handles to move the front of the table back and forth to clamp the workpiece.
 - Each end of the moveable table can be moved independently, thereby allowing tapered work to be gripped.

NOTE: The workbench is capable of exerting considerable force. Be extremely careful therefore when clamping your work. Use the minimum force necessary.

2. The rear of the table can be moved backwards to clamp larger workpieces
3. Lift the tabs shown and slide the rear of the table backward/ forwards.



A SELECTION FROM THE VAST RANGE OF

Clarke®

QUALITY PRODUCTS

AIR COMPRESSORS

From DIY to industrial, Plus air tools, spray guns and accessories.

GENERATORS

Prime duty or emergency standby for business, home and leisure.

POWER WASHERS

Hot and cold, electric and engine driven - we have what you need

WELDERS

Mig, Arc, Tig and Spot. From DIY to auto/industrial.

METALWORKING

Drills, grinders and saws for DIY and professional use.

WOODWORKING

Saws, sanders, lathes, mortisers and dust extraction.

HYDRAULICS

Cranes, body repair kits, transmission jacks for all types of workshop use.

WATER PUMPS

Submersible, electric and engine driven for DIY, agriculture and industry.

POWERTOOLS

Angle grinders, cordless drill sets, saws and sanders.

STARTERS/CHARGERS

All sizes for car and commercial use.



PARTS & SERVICE: 0208 988 7400

E-mail: Parts@clarkeinternational.com or Service@clarkeinternational.com

SALES: UK 01992 565333 or Export 00 44 (0)1992 565335

Clarke® INTERNATIONAL Hemnall Street, Epping, Essex CM16 4LG
www.clarkeinternational.com